

Ambleside

Future Flood Risk Management

January 2018

Background

Following Storm Desmond, flood risk management authorities were commissioned by Government to reduce flood risk not only at community level, but to look for options to reduce flood risk across the County from Source to Sea. This means we have taken a new approach, working at a catchment scale to integrate land management, development and resilience from the tops of the fells down to the coast. In order for us to deliver flood risk benefits across the County in this way we are now part of an established partnership called Cumbria Strategic Flood Partnership (CSFP).

What does Cumbria Strategic Flood Partnership do?

The CSFP aims to lead, coordinate and monitor the management of flood risk across the County. This Partnership brings together Flood Risk Management Authorities including the Environment Agency, Cumbria County Council, District Councils, United Utilities and representation from other organisations including land managers and community groups who have an interest in, or responsibility for, flood risk management.

The CSFP is structured over two levels – the Board (strategic level) and Catchment Management Groups (operational/delivery level). The Board takes an overview of the whole Partnership, setting the direction and ensuring the three Catchment Management Groups deliver their objectives. The Board is currently chaired by Cumbria County Council and the South Cumbria Catchment Management Group is chaired by South Cumbria Rivers Trust.

Cumbria Strategic Flood Partnership Community representation

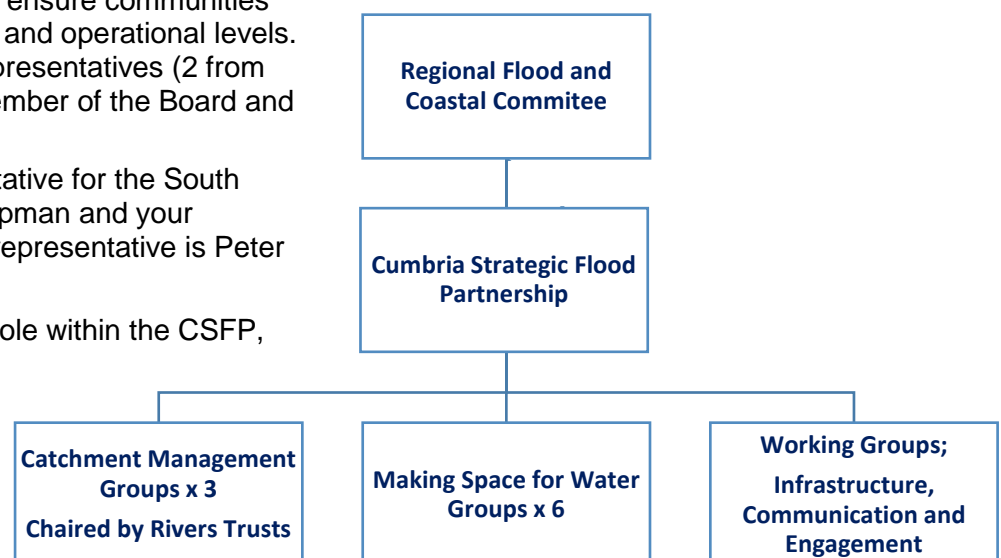
A key objective of the CSFP is to ensure communities are represented at both strategic and operational levels. It has appointed 6 community representatives (2 from each catchment area) to be a member of the Board and Catchment Management Group.

Your community Board representative for the South Cumbria catchment is Janet Chapman and your Catchment Management Group representative is Peter Lansberry.

If you have any queries on their role within the CSFP, you can contact them on:

chas.chapman@btinternet.com

peter@lansberry.co.uk



For more information on the CSFP visit www.cumbriastrategicfloodpartnership.org

or email CSFP@cumbria.gov.uk

customer service line
03708 506 506

incident hotline
0800 80 70 60

floodline
03459 88 11 88

Ambleside

Future Flood Risk Management

Work undertaken in Ambleside

Following the flood event in December 2015, the Environment Agency has:

- Undertaken gravel maintenance on Stock Ghyll near the car park upstream of Stoney Lane in autumn 2016. Areas throughout the village are continually monitored and assessed. See <https://www.gov.uk/government/publications/river-and-coastal-maintenance-programme> for the specific maintenance programme in Ambleside.
- Supported Cumbria County Council to investigate the flooding to Greenbank Road. There has been a joint approach to planning and engagement to determine if, and what, can be delivered to reduce the flood risk.
- Incorporated community ideas and knowledge into current appraisal work for the village and catchment.
- Engaged with communities to help explain the government rules on funding for schemes.

What next?

In June we published the “long list” of options and we have been refining each option, measuring their viability against the following four tests;

Technical feasibility : Economic viability : Environmental sustainability : Community support

We now have a “short list” of options for Ambleside and want to share these with the local community. These options currently represent a sufficiently good return on government investment to allow the scheme to progress with the business case.

We will continue to develop and refine the short list options required for the full business case, which will be used to secure the most viable flood risk management scheme using the four tests.

Once the full business case is approved we will then progress with detailed design and construction, which includes planning applications, all other approvals, permits and landowner agreements required to deliver a scheme.

Options that are most likely to move forward include linear defences, culvert upsizing, flow routing and storage, including an assessment of the role of Rydal Water. We are investigating several locations and specific design details to provide the optimum flood protection. These will be determined and refined into a more detailed “short list” in the near future and subsequently shared at a community drop-in meeting on Tuesday 27th February (see below for details).

In addition to this we are also:

- Publishing the option outcomes, due in early 2018 at the consultation meetings or by request.
- Completing a hydrological model for the Windermere catchment to improve flood risk management.
- Improving the resilience of our flood warning/forecasting stations to reduce the amount of damage or losses of data to enable our Incident room to have real time data across the network of river level/flow and rainfall stations. Improved rain gauges are due to be installed at Mickleden, Fisher Tarn and Brathay Hall in 2018 and one is due to be commissioned at Dubbs Reservoir shortly
- Working with Cumbria County Council and local stakeholders to divert flood water away from properties on Greenbank Road.
- Investigating flood risk from fell runoff and watercourses to the east of Fisherbeck Park. Continuing to support the scoping of Natural Flood risk Management (NFM) research and project developments for upstream catchments.

Ambleside

Future Flood Risk Management

We are organising a community drop-in which will take place on Tuesday 27 February 2018 in the upstairs room at Ambleside library. Call in anytime between 2pm and 7pm. We will share the “short list” of options with you and will have plans showing where each option could be located. We will provide an update on the next steps for Ambleside and Grasmere.

Outline Delivery Programme



The Strategic Outline Business Case provides a high level understanding of the flood risk and demonstrates the need to continue working on a scheme and complete the Final Business Case.

The Final Business Case provides all the detailed technical, economic and environmental information to justify a compelling case to invest the money to build a scheme.

Ambleside

Future Flood Risk Management

Timescale

The appraisal process can take time to ensure we follow the correct rules and procedure in spending Government money.

For further information on the funding process and the rules we must follow, read the “guide on how the Environment Agency fund and deliver flood risk management schemes” under the ‘Funding’ section of the Cumbria Strategic Flood Partnership website <http://www.cumbriastrategicfloodpartnership.org>

Ambleside Community Emergency Planning and Response Group

A group of Ambleside residents are working together to produce a community resilience plan to ensure a coordinated neighbourly response if faced with an emergency situation. This does not replace the role of the emergency services. If you would like to learn more or offer your assistance, Andy Caple andy.caple@gmail.com will be pleased to hear from you.

Contacting the Environment Agency

If you would like to contact the Environment Agency about future flood risk management you can email CMBLNC-PSO@environment-agency.gov.uk. If your query relates to community or personal resilience please contact clfloodresilience@environment-agency.gov.uk.

Be flood ready

We will never be able to guarantee a completely flood-free future, and so we encourage anyone living or working in a flood risk area to be aware and to be prepared. We can support you by: signing you up to receive free **flood alerts**; helping you to produce a **personal flood plan**; offering **property resistance and resilience** information; and supporting the ongoing work of the **community flood action group**.

It is important that you are prepared for flooding and we encourage you to take 4 simple steps:-

- 1. Sign up** to receive free flood alerts.
- 2. Know what to do.** Have a personal flood plan for you and your family, and consider packing a bag with essential items and having it ready to go in the event of flooding.
- 3. Keep an eye** on the situation. You can view a 5 day weather forecast and monitor the river levels online.
- 4. Keep up to date** with early warnings of heavy rain which could lead to flooding by registering for Cumbria Community Messaging. This is a free e-mail service and is complementary to our Flood Warning Service. To register visit www.cumbriacommunitymessaging.co.uk

For information on the above, visit
<https://flood-warning-information.service.gov.uk/warnings>
or ring Floodline on 0345 988 1188



customer service line
03708 506 506

incident hotline
0800 80 70 60

floodline
03459 88 11 88