

# Braithwaite

## Future Flood Risk Management

January 2018

### Background

Following Storm Desmond, flood risk management authorities were commissioned by Government to reduce flood risk not only at community level, but to look for options to reduce flood risk across the County from Source to Sea. This means we have taken a new approach, working at a catchment scale to integrate land management, development and resilience from the tops of the fells down to the coast. In order for us to deliver flood risk benefits across the County in this way we are now part of an established partnership called Cumbria Strategic Flood Partnership (CSFP).

### What does Cumbria Strategic Flood Partnership do?

The CSFP aims to lead, coordinate and monitor the management of flood risk across the County. This Partnership brings together Flood Risk Management Authorities including the Environment Agency, Cumbria County Council, District Councils, United Utilities and representation from other organisations including land managers and community groups who have an interest in, or responsibility for, flood risk management.

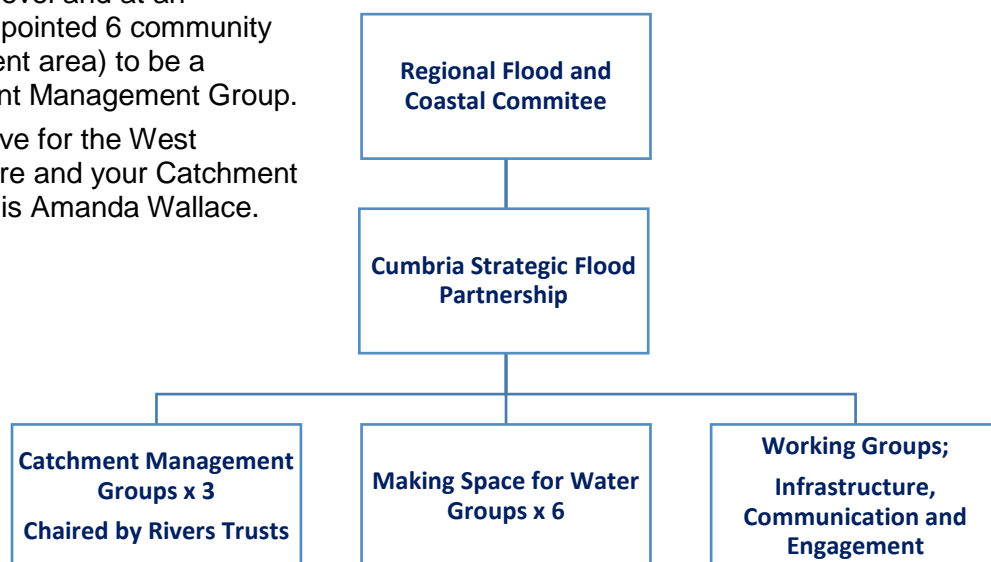
The CSFP is structured over two levels – the Board (strategic level) and Catchment Management Groups (operational/delivery level). The Board takes an overview of the whole Partnership, setting the direction and ensuring the three Catchment Management Groups deliver their objectives. The Board is currently chaired by Cumbria County Council and the Catchment Management Group is chaired by West Cumbria Rivers Trust.

### Cumbria Strategic Flood Partnership Community representation

A key objective of this Partnership is to ensure communities are represented at both a strategic level and at an operational level. The CSFP has appointed 6 community representatives (2 for each catchment area) to be a member of the Board and Catchment Management Group.

Your community Board representative for the West Cumbria catchment is Sue Cashmore and your Catchment Management Group representative is Amanda Wallace.

If you have any queries on their role within the CSFP, you can send an email to the Environment Agency mailbox at [CLfloodresilience@environment-agency.gov.uk](mailto:CLfloodresilience@environment-agency.gov.uk) and we will forward your email to the relevant representative.



For more information on the CSFP visit [www.cumbriastrategicfloodpartnership.org](http://www.cumbriastrategicfloodpartnership.org) or email [CSFP@cumbria.gov.uk](mailto:CSFP@cumbria.gov.uk)

customer service line  
03708 506 506

incident hotline  
0800 80 70 60

floodline  
03459 88 11 88

# Braithwaite

## Future Flood Risk Management

### Work undertaken in Braithwaite

Following the flooding in December 2015, the Environment Agency has:

- Replaced the damaged flood defence embankment upstream of the bridge with a reinforced concrete wall.
- Removed gravel from the gravel trap upstream of Braithwaite on Coledale Beck, and removed further gravel accumulations in the village to restore channel capacity and conveyance.
- Refurbished sections of timber revetments and embankment along Coledale Beck.
- Undertaken appraisal work which has identified a long list of options which was published during the summer 2017. Modelling of Coledale Beck has been completed as part of this appraisal.
- Agreed thresholds for emptying the gravel trap and removing gravel in Coledale Beck with the community.
- Undertaken modelling work throughout the Derwent catchment, including Braithwaite. This new hydraulic model will improve our understanding of flood risk in the area.
- Deployed temporary defences, pumps and sandbags in advance of high rainfall forecasts. This programme is set to continue.
- Established a working relationship with Highways England in order to align shared objectives to reduce the risk of flooding to homes and infrastructure.
- Worked with the community and partners to develop a pilot scheme aimed at improving ways of working.
- Incorporated community ideas and understanding into current appraisal work for the village and catchment.
- Continue to employ a catchment based approach through the Catchment Management Group and working groups.
- Engaged with communities to help explain the government rules on which funding for schemes relies upon.

### What next?

In the summer of 2017, we published the “long list” of options and we have been refining each option, measuring their viability against the following four tests;

1. Technical feasibility
2. Economic viability
3. Environmental sustainability
4. Community support

We now have a “short list” of options for Braithwaite and want to share these with the local community. These options currently represent a sufficiently good return on government investment to allow the scheme to progress with the business case.

We will continue to develop and refine the short list options required for the full business case, which will be used to secure the most viable flood risk management scheme using the four tests above.

Once the full business case is approved we will then progress with detailed design and construction, which includes planning applications, all other approvals, permits and landowner agreements required to deliver a scheme.

Options which are most likely to move forward include flood walls and embankments to protect properties on both sides of Coledale Beck.

We continue to seek and improve partnerships and explore additional funding opportunities to improve the standard of protection offered to homes and businesses in the village.

customer service line  
03708 506 506

incident hotline  
0800 80 70 60

floodline  
03459 88 11 88

# Braithwaite

## Future Flood Risk Management

In addition to this we are also;

- Investigating the possibility of upgrading the existing camera on Coledale Low Bridge for night time use and telemetry options for upstream of Coledale Low Bridge in conjunction with the parish council.
- Supporting Natural Flood Management research and development throughout the catchment.
- Continuing to employ a catchment based approach through the Catchment Management Group and working groups.



The Strategic Outline Business Case provides a high level understanding of the flood risk and demonstrates the need to continue working on a scheme and complete the Final Business Case.

The Final Business Case provides all the detailed technical, economic and environmental information to justify a compelling case to invest the money to build a scheme.

This process takes time. As we are spending Government's money in providing flood risk management we must follow their rules and procedures. For further information on the funding process and the rules we must follow, read the "guide on how the Environment Agency fund and deliver flood risk management schemes" under the 'Funding' section of the Cumbria Strategic Flood Partnership website <http://www.cumbriastrategicfloodpartnership.org>

customer service line  
03708 506 506

incident hotline  
0800 80 70 60

floodline  
03459 88 11 88

# Braithwaite

## Future Flood Risk Management

We are currently organising a community drop-in which will take place in Keswick on the 13<sup>th</sup> of March 2018 at the Skiddaw Hotel. Drop in between 2pm and 7pm. We will formally share the “short list” of options with you and will have plans showing where each option could be located. We will provide an update on the next steps.

### Above Derwent Flood Action Group

Residents within your village have produced a community plan to ensure the local response is coordinated and comprehensive in an emergency situation. If you would like to speak to your local flood action group about this work or another local issue, you can contact them by emailing the [clfloodresilience@environment-agency.gov.uk](mailto:clfloodresilience@environment-agency.gov.uk) mailbox and we will forward your queries to the flood action group.

### Contacting the Environment Agency

If you would like to contact the Environment Agency about future flood risk management you can email [CMBLNC-PSO@environment-agency.gov.uk](mailto:CMBLNC-PSO@environment-agency.gov.uk). If your query relates to community or personal resilience please contact [clfloodresilience@environment-agency.gov.uk](mailto:clfloodresilience@environment-agency.gov.uk).

### Be flood ready

We will never be able to guarantee a completely flood-free future, and so we encourage anyone living or working in a flood risk area to be aware and to be prepared. We can support you by helping you to produce a **personal flood plan**, offering **property resistance and resilience** information and supporting the ongoing work of the **community flood action group**.

It is important that you are prepared for flooding and we encourage you to take 3 simple steps:-

1. Have a personal flood plan for you and your family. Consider packing a bag with essential items and having it ready to go in the event of flooding.
2. Keep an eye on the situation. You can view a 5 day weather forecast online and can monitor the CCTV located on Coledale Beck online at <http://www.vision-link.co.uk/braithwaite.php>.
3. Keep up to date with early warnings of heavy rain which could lead to flooding by registering for Cumbria Community Messaging. This is a free e-mail service.  
To register visit [www.cumbriacommunitymessaging.co.uk](http://www.cumbriacommunitymessaging.co.uk)

**For information on the above, visit**  
<https://flood-warning-information.service.gov.uk/warnings>  
**or ring Floodline on 0345 988 1188**



customer service line  
03708 506 506

incident hotline  
0800 80 70 60

floodline  
03459 88 11 88