

# Carlisle Flood Risk Management Scheme

January 2020

## Phase One Melbourne Park and Eden Embankments

Construction work started in July 2019 to raise and extend existing defences and improve water conveyance through Botcherby Bridge on the River Petteril. However, progress was frustrated by the wettest Summer and Autumn in the last 30 years causing construction delays.

We paused major construction activities and focused our efforts on other tasks such as embankment drainage and service protection, to accelerate our return in Spring 2020. All Phase One works are expected to be complete in Autumn 2020. The works for Phase One includes:

- **990m of existing bank raising** in Melbourne Park by **0.5m-0.7m**
- **420m of new embankment** will be constructed upstream of Botcherby Bridge up to **1.5m** high
- **300m of existing wall raising** downstream of Botcherby Bridge by **250mm**
- **70m of wall raising** upstream of Botcherby Bridge by **500mm**
- **Improvements to the underneath structure of Botcherby Bridge to improve river flows**
- **Improved defences at the Warwick Road Tesco entrance**
- **Eden embankment raising** by up to **550mm**
- **4 existing flood gates** that maintain access will be **refurbished and raised**
- **Installation of benches, community notice boards and wildflower areas** will be some of the environmental enhancements delivered within Melbourne Park



**January 2020**



Phase 2: Sands Centre defence enabling works

**Spring 2020**



Phase 1: Embankment construction works re-commencing

**Autumn 2020**



Phase 1: Botcherby Bridge improvements completed

**Autumn 2020**



Phase 1: Melbourne Park embankments completed

## Phases Two and Three

Phase Two covers the Sand Centre and Bitts Park area and will consist of raising existing defences on the River Eden through Carlisle.

Phase Three covers the Denton Holme and Caldewgate area and will consist of raising existing defences along the River Caldew.

Overall, we are aiming to achieve a level of protection equivalent to the flood levels experienced in Storm Desmond, providing a much greater level of flood protection for Carlisle.

Current work includes ground investigations, environmental studies and survey work for Phases Two and Three of the scheme. This information will inform the necessary permissions and the development of the preferred option. We are also carrying out enabling works at the Sands in preparation for the main works in Summer 2020.

We intend to hold drop-in sessions for residents to come along and see our proposals for Phases Two (Spring) and Three (Autumn). We will communicate clearly the proposed dates and details nearer the time.

We are also investigating options for improvements to flood risk at Etterby Terrace, we are working in partnership with CCC and UU to assess the risk of flooding from drains and sewers alongside flooding from the River Eden.

## Find out more

We will continue to engage with you on the phasing of works throughout Carlisle to ensure we keep you informed of our plans and delivery programme. We have installed noticeboards at the entrances to Melbourne Park which will continue to be updated regularly. Find out more about drop-in sessions and other important information by visiting:-

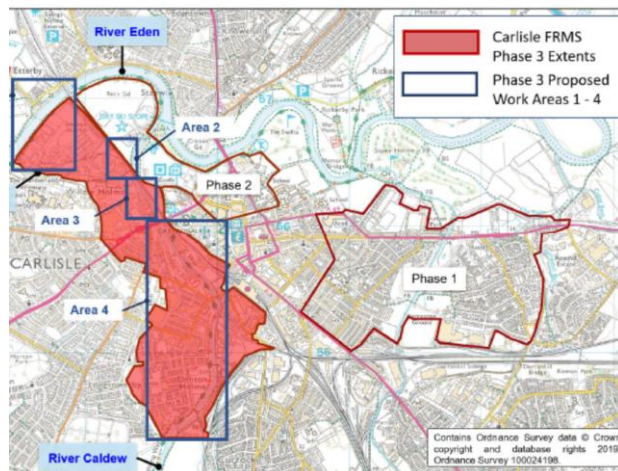
- [www.cumbriastrategicfloodpartnership.org](http://www.cumbriastrategicfloodpartnership.org) for how we are contributing to managing flood risk from Source to Sea
- [www.thefloodhub.co.uk/Carlisle](http://www.thefloodhub.co.uk/Carlisle)
- Follow us on Twitter @EnvAgencyNW #Carlisle
- If you want to contact us you can e-mail [CarlisleFRMS@environment-agency.gov.uk](mailto:CarlisleFRMS@environment-agency.gov.uk)

## **Contact Us**

Customer service	03706 506 506
Floodline	03459 881 188
Incident hotline	0800 80 70 60

## **Keep up to date**

Information boards located in Melbourne Park will provide construction works updates.  
[www.thefloodhub.co.uk](http://www.thefloodhub.co.uk) in 'your local area'



**Spring 2020**



Phase 2: Consultation & Planning submission

**Autumn 2020**



Phase 3: Consultation & Planning submission