

# Carlisle Flood Risk Management Scheme

May 2020

## Phase One Melbourne Park and Eden Embankments

Construction work started in July 2019 to raise and extend existing flood defences along the River Eden and improve water conveyance through Botcherby Bridge on the River Petteril. Whilst major construction activities were paused throughout the winter months, we focused efforts onto other tasks such as embankment drainage to accelerate our return in Spring 2020. Essential construction works in Melbourne Park recommenced in April and are being carried out in line with the Government's most up to date advice and social distancing measures during the COVID-19 pandemic. We are working hard to complete Phase One works by Autumn 2020. Our landscape design plans to enhance Melbourne Park are being finalised and we will share more on this in the future.



Melbourne Park embankment construction



Essential works are continuing safely

## Phase Two The Sands Centre and Bitts Park Area

Phase Two covers the Sands Centre and Bitts Park area and consists of raising existing defences on the River Eden through Carlisle. During the winter pause of Phase One construction, we utilised our Phase One contractor, BAM, to make an accelerated start on Phase Two enabling works. This included reinforcing the foundations of existing defences at The Sands Centre to accommodate the new defence height.

The planning submission for Phase Two is currently scheduled for Summer 2020. We are looking into alternative ways to provide the opportunity to view and comment on Phase Two plans and will share details of how to access these in due course. All information and updates will be also be available on

[www.thefloodhub.co.uk/carlisle](http://www.thefloodhub.co.uk/carlisle).



Foundation strengthening at the Sands Centre



Flood risk  
Investment



Homes better protected



Businesses better  
protected



Community facilities  
better protected



Bridge strengthened  
and improved



Metres of new and  
improved flood  
embankments and walls



Hectares of habitat &  
recreational space  
improved

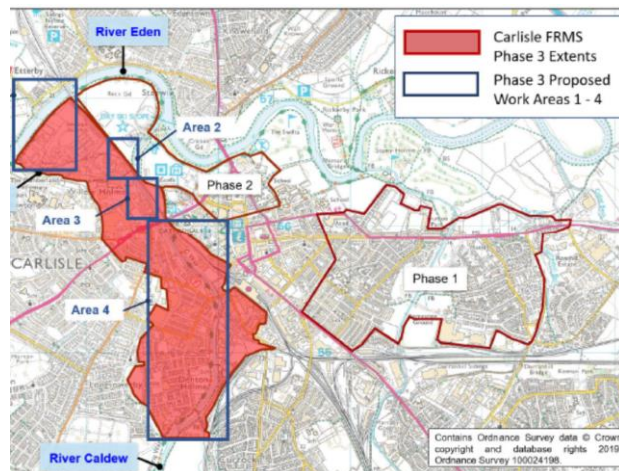


Money saved from  
future flood damages

## Phase Three

Phase Three covers the Denton Holme and Caldewgate area and will consist of raising existing defences along the River Caldew along with enhanced maintenance of the river corridor. Overall, we are aiming to achieve a level of protection equivalent to the flood levels experienced in Storm Desmond, providing a much greater level of flood protection for Carlisle.

We are also investigating options for improvements to flood risk at Etterby Terrace, we are working in partnership with CCC and UU to assess the risk of flooding from drains and sewers alongside flooding from the River Eden.



## West Coast Mainline Bridge

Network Rail are in the process of planning and designing maintenance work on the railway bridge over the River Eden. We are working closely with their design team to explore options to increase the capacity of the bridge to convey flood water as part of these works. Both the Environment Agency and Network Rail hope to be able to provide additional flood risk benefit to Carlisle as a result of this work.

## Covid-19

The Environment Agency are committed to delivering this Scheme to better protect homes and businesses in Carlisle and as such we, and our Contractors, are following Government and Public Health England guidance. This is to ensure the safety of all of our staff but also for the members of public who work and live near our works.

## Find out more

We will continue to engage with you on the phasing of works throughout Carlisle to ensure we keep you informed of our plans and delivery programme. We have installed noticeboards at the entrances to Melbourne Park which will continue to be updated regularly.

Find out more by visiting:

- [www.cumbriastrategicfloodpartnership.org](http://www.cumbriastrategicfloodpartnership.org) for how we are contributing to managing flood risk from source to sea
- [www.thefloodhub.co.uk/carlisle](http://www.thefloodhub.co.uk/carlisle)
- Follow us on Twitter @EnvAgencyNW #Carlisle
- If you want to contact us you can e-mail [CarlisleFRMS@environment-agency.gov.uk](mailto:CarlisleFRMS@environment-agency.gov.uk)

### Contact Us

Customer service 03706 506 506  
Floodline Incident 03459 881 188  
hotline 0800 80 70 60

### Keep up to date

Information boards located in Melbourne Park will provide construction works updates. [www.thefloodhub.co.uk](http://www.thefloodhub.co.uk) in 'your local area'

### Summer 2020



Phase 2: Consultation & Planning submission

### Autumn 2020



Phase 3: Consultation & Planning submission