

Carlisle Flood Risk Management Scheme

£25m
£25 million investment



2100
More than 2100 homes protected across Carlisle City



Phase 1 Melbourne Park and Eden Embankments

Essential construction works recommenced in April and are being carried out in line with the Government's most up to date advice and social distancing measures during the COVID-19 pandemic. Great progress has been made by our contractor, BAM, on raising Melbourne Park embankments and defences along the River Petteril. In-River works have also recommenced at Botcherby Bridge. We are working hard to have Phase One operational ahead of winter 2020.

Our consultation with residents at Riverside Way and Falcon Mews has helped shape our landscape design plans to enhance Melbourne Park. The plans will become available to view on the Flood Hub. This autumn, we are intending to raise the Eden embankments and install a new flood gate at the Tesco entrance off Warwick Road. We will share further details in due course.



Works recommenced at Botcherby Bridge



Petteril wall raising and replaced copings



Melbourne Park embankment raising

Phase Two The Sands Centre and Bitts Park Area

Phase Two consists of increasing flood protection on the River Eden through Carlisle. Enabling works at The Sands Centre were completed in early 2020, reinforcing the existing flood defence wall ready to accommodate the increased height. Further permitted development works will commence early August 2020.

Our pre-planning consultation for Phase Two is now live and our plans are available to view online at The Flood Hub www.thefloodhub.co.uk/carlisle-phase-2

Whilst current COVID-19 social distancing measures prevent us from holding a face to face community drop-in event at this time, we hope that you will take the opportunity to view the scheme information online at your leisure and we would welcome your feedback via e-mail at CarlisleFRMS@environment-agency.gov.uk

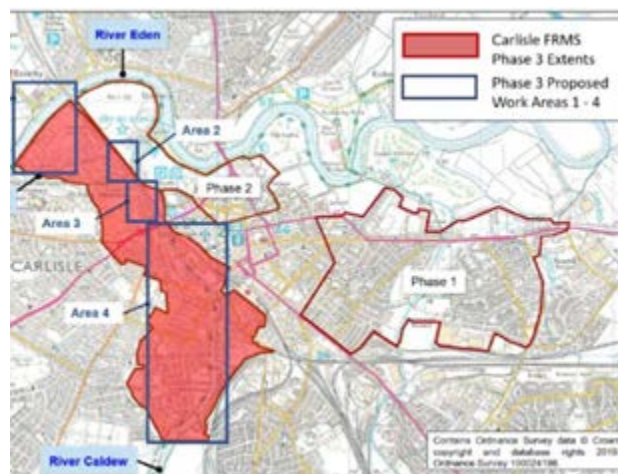
Now Live



Phase 2: Online consultation

Phase Three

Phase Three covers the Denton Holme, Willow Holme and Caldewgate area and will consist of raising existing defences along the River Caldew along with enhanced maintenance of the river corridor. Ground investigations are due to commence in September 2020 at the Caldew Maltings. Overall, we are aiming to achieve a level of protection equivalent to the flood levels experienced in Storm Desmond, providing a much greater level of flood protection for Carlisle.



Etterby Terrace

We are also investigating options for improvements to flood risk at Etterby Terrace, we are working in partnership with CCC and UU to assess the risk of flooding from drains and sewers alongside flooding from the River Eden.

West Coast Mainline Bridge

Network Rail are in the process of planning and designing maintenance work on the railway bridge over the River Eden. We are working closely with their design team to explore options to increase the capacity of the bridge to convey flood water as part of these works. Both the Environment Agency and Network Rail hope to be able to provide additional flood risk benefit to Carlisle as a result of this work.

Covid-19

The Environment Agency are committed to delivering this Scheme to better protect homes and businesses in Carlisle and as such we, and our Contractors, are following Government and Public Health England guidance. This is to ensure the safety of all of our staff but also for the members of public who work and live near our works.

Find out more

We will continue to engage with you on the phasing of works throughout Carlisle to ensure we keep you informed of our plans and delivery programme. Phase One noticeboards have been installed at the entrances to Melbourne Park and are updated regularly, Phase Two noticeboards will be installed at Bitts Park and The Sands Centre.

Find out more by visiting:

- www.cumbriastrategicfloodpartnership.org for how we are contributing to managing flood risk from source to sea
- www.thefloodhub.co.uk/carlisle to view our most recent newsletters and up to date information
-  Follow us on Twitter @EnvAgencyNW #Carlisle
- Or contact us via e-mail CarlisleFRMS@environment-agency.gov.uk

Contact Us

Customer service 03706 506 506
Floodline Incident 03459 881 188
hotline 0800 80 70 60

Keep up to date

Information boards located in Melbourne Park will provide construction works updates. www.thefloodhub.co.uk in 'your local area

