

Kendal Flood Risk Management Scheme

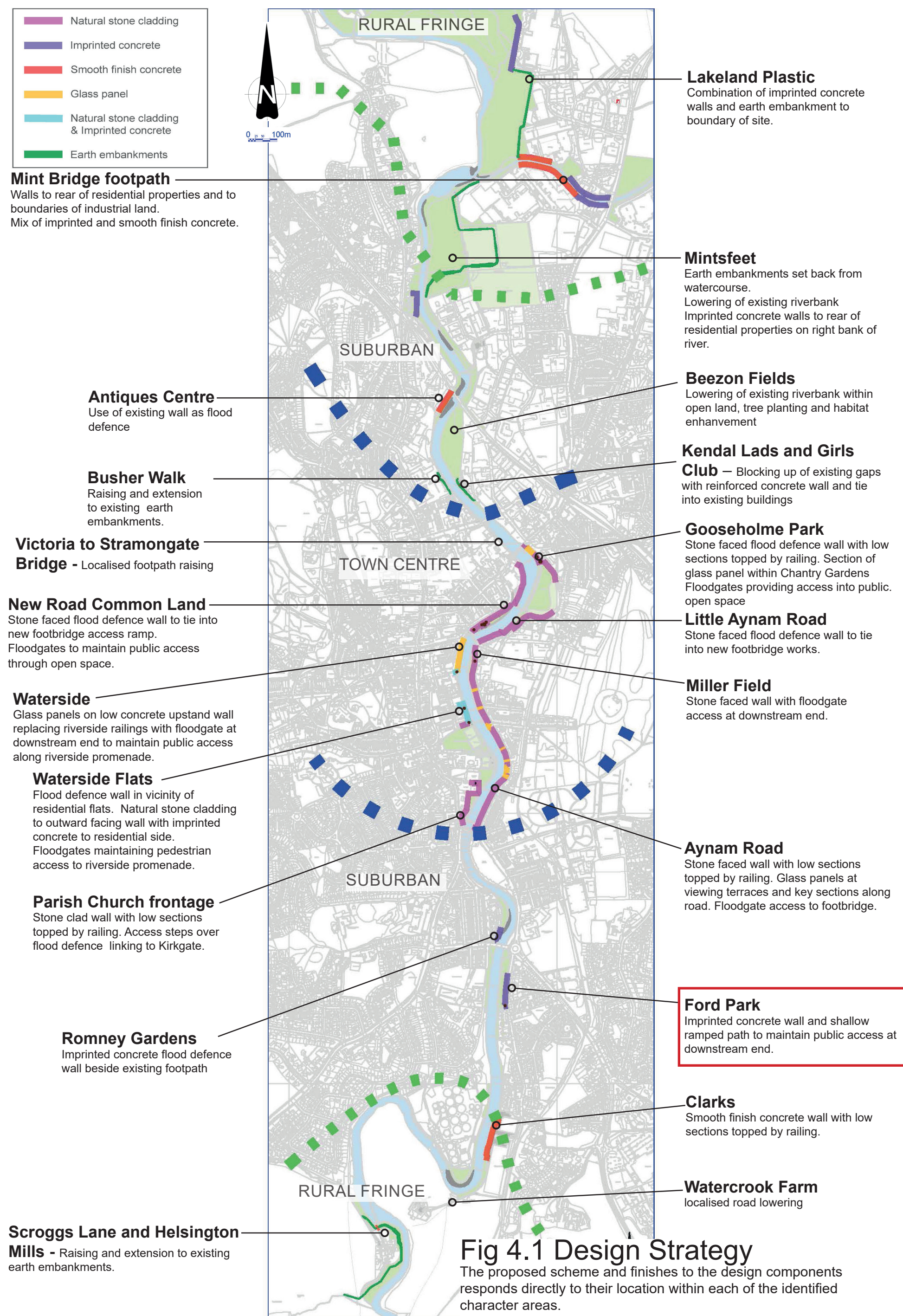


European Union European Regional Development Fund

Scheme overview

The Environment Agency is delivering a Flood Risk Management Scheme to better protect homes and business from flooding in the Kent catchment, and improve the local environment and community amenities. Kendal is the first area to be delivered, followed by Burneside, Staveley, and Ings, and upstream measures including flood storage.

Plan of flood defences and finishes



What have we done?

This section of flood defence involved the construction of a small flood wall along the riverside footpath. The flood defence varies in height from 300mm - 500mm and is finished in imprinted stone. A section of concrete kerb has also been installed which ties into the new flood defence wall.



Pre construction



Post construction

Community improvements

As part of the works the footpath has been fully resurfaced.

Landscaping

We have undertaken some landscaping works in Autumn, which is ideal planting season. We have planted an extensive assortment of ornamental shrubs, seed mix and trees.

Landscaping and planting

We were able to deliver this part of the scheme without removing any riverside trees. We have made a commitment to improve the river corridor through the town and we plan to undertake extensive planting in this area.

We have planted:

- Over 1,600 ornamental plants
- 6 new trees
- 3 seed mixes

Perennial Ryegrass

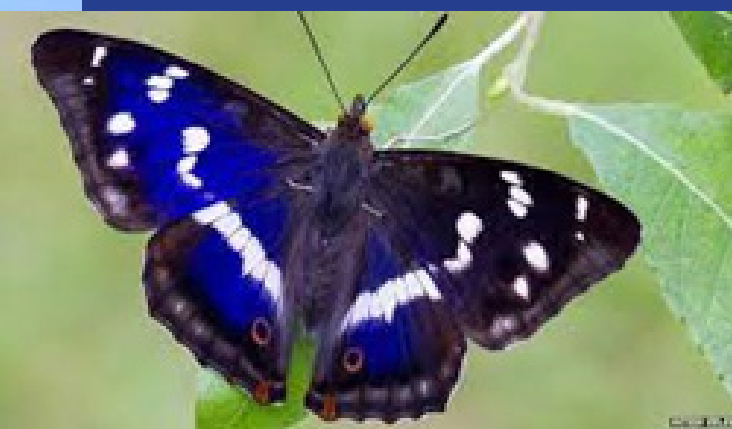


Environmental and wildlife benefits

The mixture of planting will bring a diverse habitat for bugs and insects and provide extensive foraging for birds and other wildlife. It will also be an area the community and visitors can enjoy.



Goat Willow



Supports lots of wildlife including the elusive and regal purple emperor butterfly.



Californian lilac - With pollen rich flowers it attracts bees, butterflies and moths.

