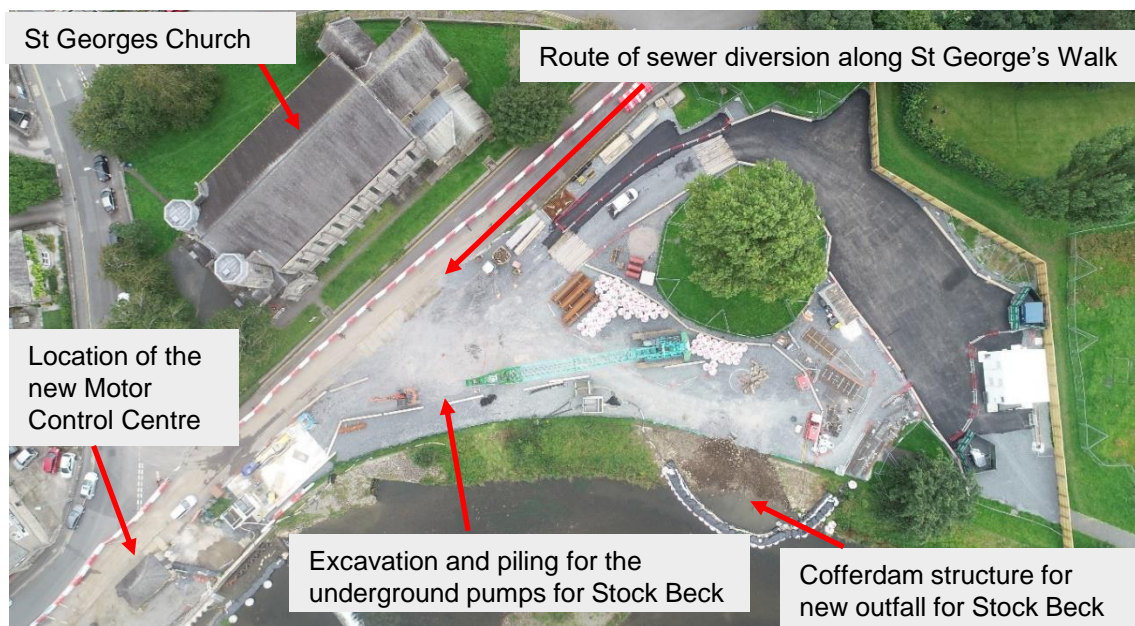


This is an update on our construction works at Gooseholme Common and associated service diversion works within the area of Castle Street, Castle Crescent and St George's Walk.

Construction of the flood scheme in this area is now underway with a number of activities taking place. We have our site working area established which encompasses all of our construction activity. As part of the site arrangement, we have several measures in place to ensure that should the river spill into Gooseholme, our construction machinery and materials can be moved, and flood protection to homes and businesses will be maintained to the current level.

This Summer, we have constructed the foundations and base of the flood wall along Castle Street, and created a sheet piled Cofferdam on the edge of the river. These works needed to be delivered during the Summer to comply with the 'in-river' working consent so we can continue to work safely over Winter.

We have recently started excavation works as we start to construct the underground chamber for the new Stock Beck pumps. The excavation works will include further piling to create a safe working area. Work will continue over winter along with the construction of the new Stock Beck outfall.



Service diversions are ongoing with ENWL currently working along Castle Street and Castle Crescent. Whilst these works are ongoing, we have opened up St George's Walk to ensure residents' access is maintained. Pedestrian and vehicle diversions are in place and appreciate your patience during this time of intense activity.

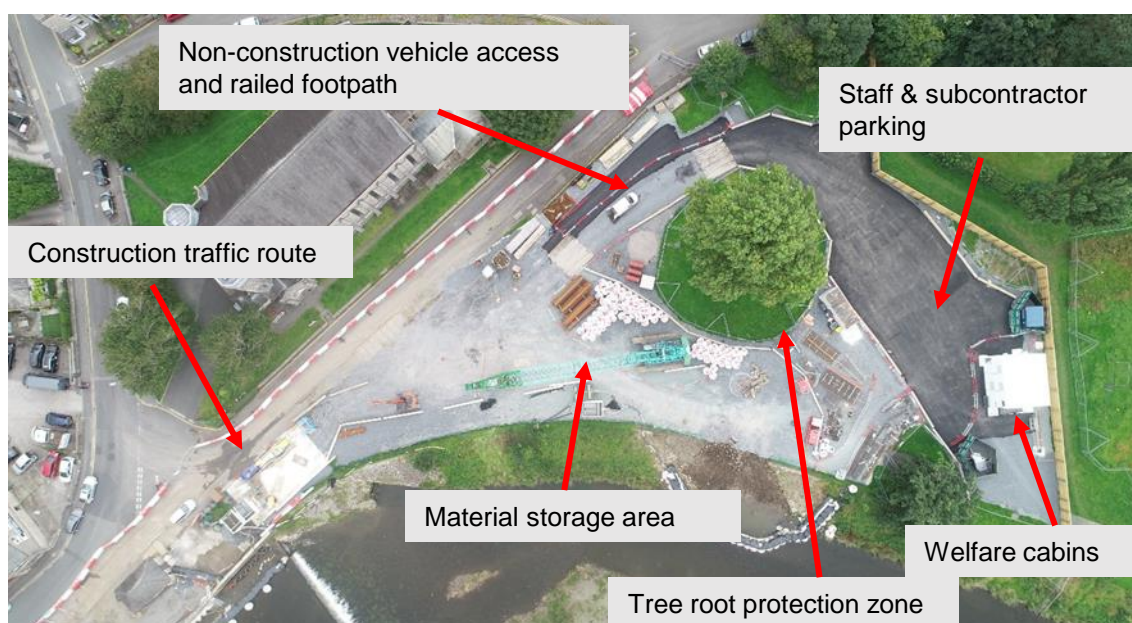
Castle Crescent residents' vehicle access arrangement from Thursday

ENWL have progressed well with their diversion and are starting to backfill and reinstate some of their open channels. ENWL have advised that from Thursday 2nd November, all vehicle access will be via Castle Street onto Castle Crescent. This will coincide with the re-closure of St George's Walk. All of the vehicle and pedestrian diversion signs will be readjusted to reflect this change.

Construction site set up arrangements on Gooseholme Common

Our working area is now established on Gooseholme Common and clearly fenced. We operate 24hour on site security which keeps our site safe during the daytime and overnight. The site has taken around half of the Common and is required to be this size to ensure all of our construction works, materials and machinery can operate safely. We also have welfare facilities on site that offers the required welfare needs for our staff.

Whilst we await a formal electricity connection to the site, the welfare cabins and site lighting is being run temporarily by a generator. The generator is an eco-generator with ultra-low emissions to keep any impacts to a minimum. We are aware the generator and lighting arrangement has impacted local residents of Castle Crescent. We have reduced the lighting as well as generator run equipment to try and reduce this further.



Demolition of the Kiosk

We will soon be preparing to demolish the existing kiosk building. This building will be replaced with the new Motor Control Centre (MCC). We have undertaken utility disconnections and a number of environmental assessments which is resulting in three new bat boxes being installed within the Gooseholme Common area. The MCC building will have a larger footprint than the existing kiosk and will house the electrical equipment required to operate the underground pumps for Stock Beck. The MCC building once built will be clad in natural stone with a slate roof to blend into the local area.



Visualisation showing the new Motor Control Centre finished in natural stone

Vehicle and pedestrian access arrangements

We acknowledge that parking and pedestrian movement within the area of Castle Street, Castle Crescent and St George's Walk is particularly challenging. Before we started construction in this area, we developed a Traffic Management Plan (TMP) with Westmorland & Furness Council which was subsequently approved as one of our planning conditions. Whilst we have delivered our traffic management and pedestrian diversions in line with the TMP, we are very aware that this has caused some concerns locally.

We have delivered the addition of double yellow lines at the entrance to Castle Crescent from Castle Street which will provide a safer access and exit arrangement for residents, refuse collections and emergency services. This is particularly important to have in place when St George's Walk is closed.

We are also in the process of obtaining approval from Westmorland & Furness Council to remove yellow lines in the area of Castle Street. This will create 7 new parking spaces which will be available for the community to utilise.

We are progressing well with the flood wall construction on Castle Street. Once our works allow, we will start to return parking spaces adjacent to Stramongate Bridge.



Visualisation showing the new Motor Control Centre and the glass topped flood wall retaining riverside views on Castle Street

Thorny Hills vehicle barrier

The vehicle barrier will remain in place at the entrance to Thorny Hills to reduce traffic movements through Castle Crescent. We will regularly review this arrangement to ensure it meets residents' needs.

Emergency Services and refuse collections

Our traffic management plan has been shared with all the emergency services and refuse collection teams. As our vehicle access arrangements change, we ensure all services are briefed and aware of the access and exit arrangements.

Construction programme summary

Our works will continue over Autumn and Winter into 2024. Here is a summary of the activities taking place during this period.

Gooseholme Common and Stramongate Bridge	Activity
November	<ul style="list-style-type: none">- ENWL complete diversion works- Demolition of the existing Kiosk- Excavation and piling of the underground pumping area
December	<ul style="list-style-type: none">- Building of the new Motor Control Centre base- Installation of the new glass panels
January	<ul style="list-style-type: none">- Commencement of the sewer diversion- Piling for the new flood wall along St George’s Walk- Building the new Motor Control Centre
February	<ul style="list-style-type: none">- Further construction of the underground pumps for Stock Beck

This programme is accurate as of October 2023, a number of factors can accelerate or delay our construction activities. If there is any change in the programme delivery, we will communicate these to you.

Winter Working On Site

Our winter working hours are Monday to Friday 08:00 to 17:00. If we should need to undertake any works at a weekend, our hours will be 08:00 to 14:00 on Saturday only. If Saturday working is required, we will communicate this to you.



Visualisation showing the area from the opposing bank of the river Kent. Here you'll be able to see the new Stock Beck outfall, the MCC and the flood defence wall.

Keeping up to date and providing feedback

We will regularly call at homes within Castle Crescent to obtain feedback on the construction works as we appreciate it is directly impacting many. We will also continue to produce and deliver newsletters providing an update on progress. We are available at the Flood Scheme Information Hub every Tuesday and Thursday between 10am and 4.30pm if you would like to come and see us.

Community feedback, concerns and actions

We continue to thank the Castle Crescent and Castle Street community for raising particular concerns which are as a direct consequence of our works. We have taken these concerns on board and this table provides a summary of each concern and the action we are taking to address them.

Community Concern	Action
Parking	
Castle Street parking opposite the garage has been removed and parking is an issue for residents and businesses	As soon as the construction works on Castle Street enable us to start to return the parking bays we will. Current programme indicates the start of the return may start in December 23. We have identified x7 additional parking spaces which can be released in the Castle Street area. We are currently working with Westmorland & Furness Council to make arrangements for these to be delivered.
St George's Walk parking has been removed and is reducing parking availability	St George's walk does fall within our construction area and therefore will be closed to parking and vehicle access. There will be occasions due to other works where we will open St George's Walk to vehicle access and pedestrians i.e ENWL works.
Castle Crescent is continuing to have parking issues due to non-residents continuing to park	Unfortunately, we have no authority to restrict parking in Castle Crescent and continue to raise the issue with Westmorland & Furness Council. We have produced additional signage as a deterrent for non-residents to park, but understand this alone has its limitations. We acknowledge there is reasonable support for a 'residents parking' scheme for Castle Crescent and will continue to highlight this with Westmorland & Furness Council.
Vehicle movements	
Potential issues for emergency services accessing Castle Crescent due to St George's Walk and Castle Crescent road restrictions	We are in regular contact with the emergency services and they are aware of the access arrangements. The width provided along St George's walk accommodates all emergency services vehicles. The addition of double yellow lines at the entrance to Castle Crescent from Castle Street will aid clear access for services once ENWL have completed their diversion. A Traffic Management Plan has been developed in conjunction with Westmorland & Furness Council which has gone through planning process and due diligence. This is shared as a statutory requirement with service 'providers and emergency services.
Delivery drivers are continuing to access Castle Crescent for Thorny Hills whilst the access remains closed	Signage is in place on Castle Street and within Castle Crescent advising access for deliveries to Thorny Hills is via Little Aynam. As soon as ENWL have finished their works, we will review the locations of our signage.
Pedestrian access	
Pedestrians and cyclists using St Georges walk jointly with vehicles which is unsafe.	We have opened up St George's walk at a width which within guidance can accommodate pedestrians and vehicles. We acknowledge that this arrangement has its limitations due to the busy nature of the area. We have improved our signage to direct pedestrians around the back of the church to Castle Street to reduce footfall along St George's Walk whilst ENWL carry out their works.
Site Compound	
Generator to power the site is noisy and giving off diesel fumes which is a concern for residents of Castle Crescent	Whilst we await an electrical connection to the cabins, a generator is required to power the cabins and lighting. The facilitation of the connection is being led by Volkerstevin with a third party contractor. The generator has ultra low emissions with a number of acoustic barrier protectors around it to ensure noise is kept to a minimum. We have undertaken noise monitoring and the generator is operating within compliance and our planning consent.
Site lighting is shining into residents homes of at night time	The site is a working area and for safety and security the site is required to be visible during night time. There is 24 hour security present and during the evenings the security team need to have full visibility of the site at all times. We have removed the lighting column and have ring lighting around the boundary of the site which is positioned at a much lower level with reduced brightness.
Tarmac car park for contractor staff is an insult to residents who cannot park	We have a number of sub contractors as well as vehicle movements on and off site. We need to ensure we have safe allocated space to monitor and manage all vehicle movements on site which are non-construction traffic.
Service Diversions	
ENWL	ENWL are progressing well on site and are programmed to be complete by the end of November. We are working with ENWL to accommodate them as they undertake their works.
United Utilities	This diversion will be delivered early next year (2024) it will be delivered by Waitings, a sub contractor of Volkerstevin. This will be within our working area and will not directly affect Castle Crescent.
Flood Protection Measures	
What measures will be put in place to protect Castle Crescent and Castle Street residents whilst the scheme is being delivered?	In the Gooseholme Common area, we will maintain the same standard of protection of that pre flood works. This will be managed and delivered, if required by Volkerstevin and their sub-contractors.
Is the gravel going to be removed from the River Kent?	The gravel in the River Kent at Stramongate Bridge is currently below the threshold for removal. In Spring, the gravel will be surveyed again and if it is showing accumulations above the agreed threshold, the gravel will be scheduled for removal during next Summer.
Making Space for water	The landscaping works taken place at Beezon Fields and currently at Mintsfeet remain to be natural flood plain. In high river level conditions, these two locations will be allowed to flood in order to create additional capacity.

Kendal Flood Risk Management Scheme

Contact us and keep up to date

October 2023

Visit our online information hub at www.thefloodhub.co.uk/kendal

Follow us on Twitter @EnvAgencyNW

Get in touch by emailing kendalFRMS@environment-agency.gov.uk

Contact us on 03708 506 506



Come and see us at our **Flood Scheme Information Hub** located at Little Aynam, Kendal, LA9 7AH. Open every Tuesday and Thursday 10am to 4.30pm.



VolkerStevin Engage

Our new project app allows you to keep up to date on the Kendal Flood Risk Management Scheme, view construction progress, images and provide feedback. Scan the QR code to download.



Kendal Flood Risk Management Scheme
Reducing flood risk and improving public spaces