

Issued: 8th July

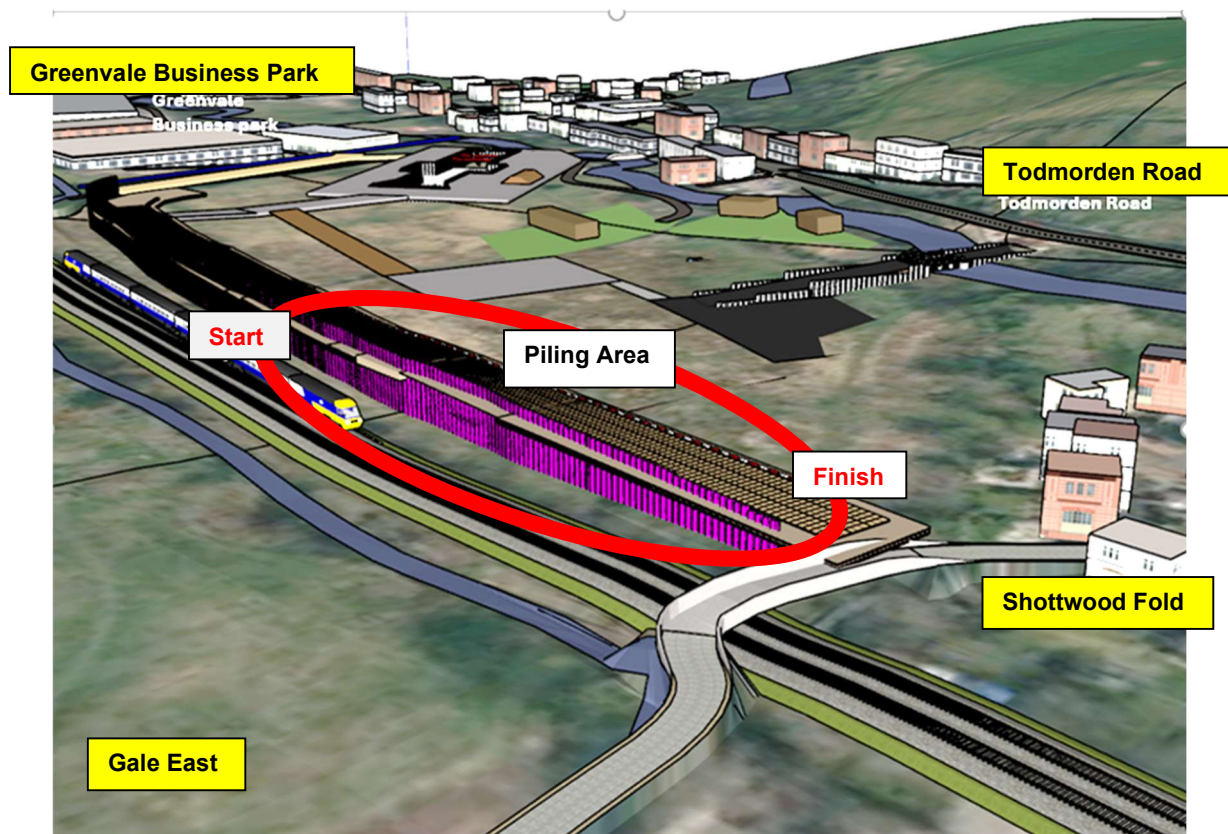
Rochdale and Littleborough Flood Risk Management Scheme

Reference – Littleborough FRMS Phase 1B Gale West – Piling Works

Dear Resident,

Further to our last communication, we will be starting our piling works on Monday 15th July. The first stage of these works will be pre-augering. Pre-augering is a commonly used technique associated with piling, which is often carried out in advance of the sheet pile installation to disturb difficult ground so the piles can be installed.

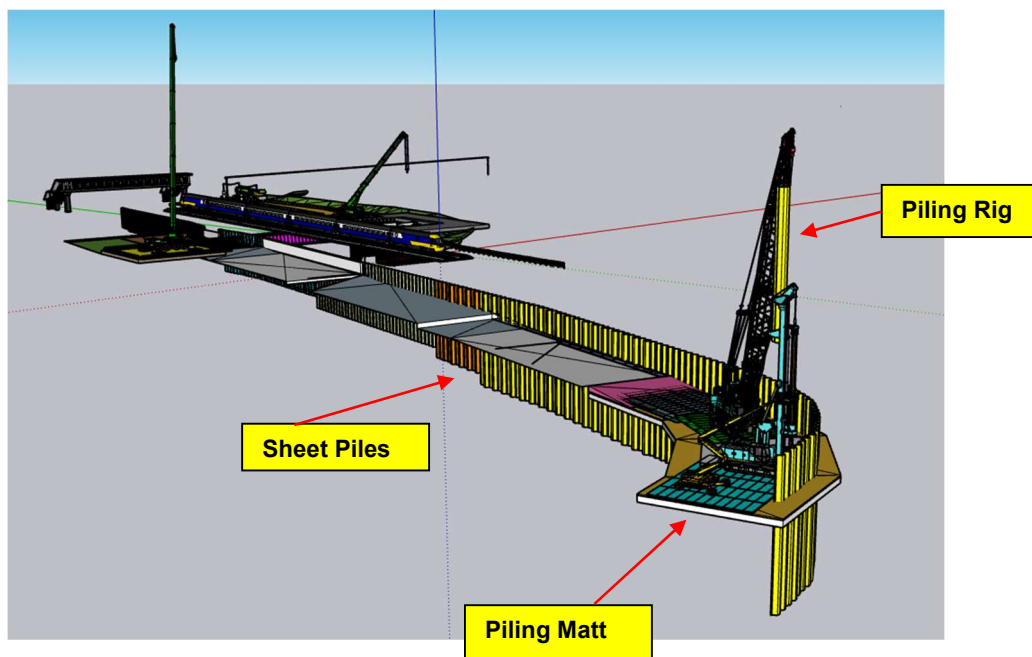
Please see the below image which shows the **highlighted piling area in pink**, from Gale East looking towards Todmorden Road.



What will we be doing?

- We will be installing approximately 260m of both sheet and box piles along the railway line. These are used to prevent water seepage both in and out of the reservoir and to form the embankment of the reservoir. The reservoir will capture excess rainfall when river levels are high and controlled by the outlet structure back into the river when levels subside. By utilising piles, the embankment footprint is not as big compared to a traditional embankment, which means more storage capabilities too.
- Works will start at end closest to Greenvale Business Park working towards Shottwood Fold as shown on the previous diagram.

The below diagram illustrates the piling set up:



How may this affect you?

- The piling works will start on **Monday 15th July** and take approximately **9 weeks** to complete. Please note piling will occur in increments throughout this duration.
- **Our working hours will be Monday to Friday 8am to 6pm.** At this time, we do not envisage any work to be undertaken outside our usual working hours, however if in exceptional circumstances this is required, we will provide you with advance notice.

- You may see an increase in construction vehicles and wagons as we bring in equipment and material onto site. However, during our construction works we will do what we can to keep any noise to a minimum.
- Disturbance is unfortunately unavoidable with this type of construction. The piling may cause noise and vibration, but this will be closely monitored at all times.

We do apologise for the disturbance, but we hope you understand that short-term disruption is unavoidable while we deliver the long-term benefit of the improved flood defences.

How to stay updated & contact us

- You can find more information on our website: <https://thefloodhub.co.uk/rochdale-and-littleborough/>
- If you have any further queries, please email us at: rochdaleandlittleborough.fas@environment-agency.gov.uk or alternatively you can call us on: 020 302 50495

As work on the scheme progresses, we will continue to provide you with updates.

Kind Regards,

Customer Services