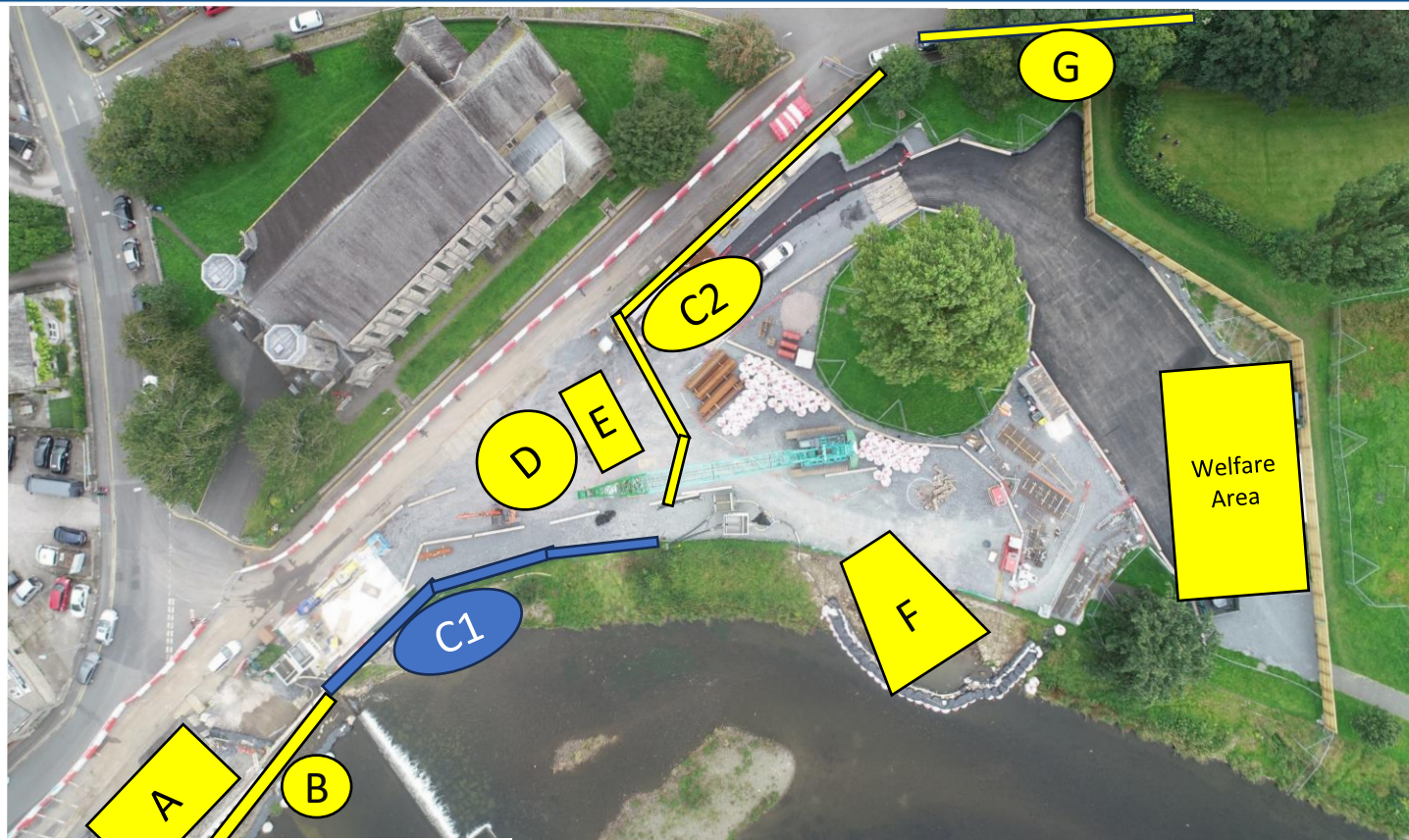


# Kendal Flood Risk Management Scheme

Gooseholme Common progress as of 30<sup>th</sup> September 2024



A – Motor Control Centre Building

65%

B – Glass Panel Flood Wall

COMPLETE

C1 – Flood Defence Wall

0%

C2 – Flood Defence Wall

50%

D – Wet Well Shaft

80%

E – Valve Chamber

70%

F – Outfall

35%

G – Kerbing Construction

COMPLETE

Overall completion -

65%

### A – Motor Control Centre

#### Building (MCC)

This building will house all the electrical infrastructure that will power the stock beck pumps in flood conditions.

### B – Glass panel flood wall

The glass panels will be partially uncovered with the remaining uncovered once the MCC building is completed

### C1 & C2 – Flood wall construction

Constructed from a sheet pile foundation the concrete flood wall will be clad in local stone.

### Overall completion tracker

65%

### D – Wet Well Shaft

This is the underground structure which will house the pumps for stock beck designed to transfer water of Stock Beck from the Well to the Outfall (A).

### E – Valve Chamber

This chamber will house the valves for the onward pumping of Stock Beck in flood conditions.

### F – Outfall

The new Stock Beck outfall into the river Kent.

### G – Kerbing

Kerbing is now complete in this location and forms part of our flood defence.

## What's happening this week

**Motor Control Centre Building (MCC)** – The construction of the MCC building has been progressing well with the majority of the stone facing now complete. The roof trusses are now in place with tiling started and continuing this week. Preparations are also being made to accommodate the installation of bat boxes.

**Sewer Diversion** – This week Waitings have continued their work, when possible around the water levels which at times have been high. Their work remains focussed on the excavation and installation of the underpass chamber. **Over pumping** of Stockbeck continues and once levels are manageable, Waitings will lift out the section of culvert which will be cleaned from gravels, debris and silt. Piling activities have now been completed in this current location.

**Wet Well** – All work we can possibly conduct for the Wet Well has been complete, further works to the wet well won't begin until the sewer diversion is complete due to the close proximity of these works.

**Valve Chamber** – The Valve Chamber is almost complete with the final pipe installation taking place this week. Following the installation of the pipes, pressure testing will take place in mid-October by specialists to ensure the pipes are connected to the required standard. Following pressure testing, the piles put in place to create the working area will be pulled out and reinstatement will take place. The pulling of the piles will not be a noisy operation, and a programmed date of when this will take place will be communicated ahead of these works.

**Flood Wall** – A 21m stretch of flood wall is almost complete along St George's Walk. The next stage is for the wall to pass alongside the valve chamber once the area has been backfilled and reinstated.

**Stock Beck Outfall** – Piling to seal the cofferdam has now been complete however, some pumping maybe required as and when necessary to remove any excess water from the sealed area. This week we will continue to excavate and level out the base of the area, so we are able to begin the works to the headwall. A metal frame will also be installed to keep the piled area secure and reinforced.

**Working Hours** – With delays to the sewer diversion due to ongoing wet ground conditions, our contractors Waitings will need to undertake Saturday working in order to get the works complete before our in-river working permissions expire. Saturday working hours will be 08:00 – 18:00 in line with our planning permission and will continue through Autumn.

[www.thefloodhub.co.uk/kendal](http://www.thefloodhub.co.uk/kendal)

For more information on the  
Kendal flood scheme



VolkerStevin Engage

Our new project app allows you to keep up to date on the Kendal Flood Risk Management Scheme, view construction progress, images and provide feedback. Scan the QR code to download.



Jacobs

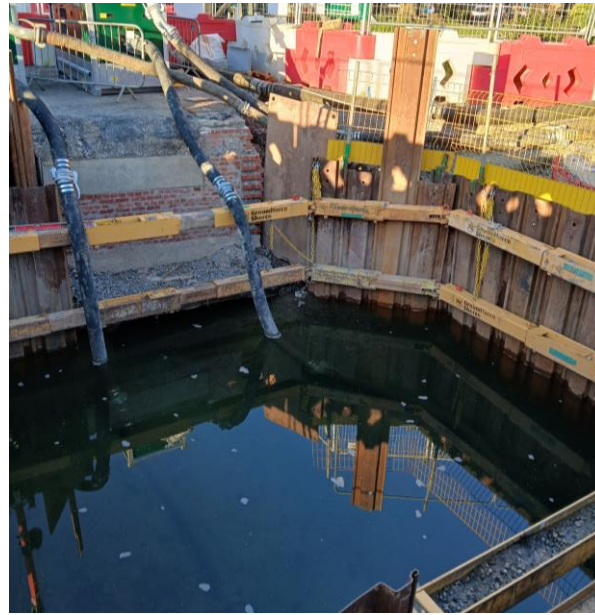




# Kendal Flood Risk Management Scheme – Gooseholme Common update for week of 30<sup>th</sup> September 2024



Motor Control Centre Building – Housing for all the electrical equipment for the Stock Beck pumps



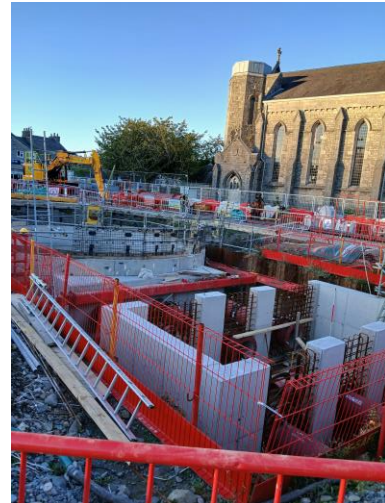
Sewer Diversion – Sheet piled area for the underpass chamber once Stock beck culvert is removed



Floodwall along St Georges walk in Construction



Outfall – The new outfall of Stock Beck into the River Kent.



Valve chamber – Holding the pipe valves that pump Stock Beck onwards to the outfall



Wet Well Shaft – Underground housing of the 3 pumps for Stock Beck