

Issued: 27th November 2024

Rochdale and Littleborough Flood Risk Management Scheme

Reference – Littleborough 1B – Greenvale Business Park Site Investigation Works

Dear Resident,

As part of the Flood Risk Management Scheme, we will be undertaking some ground investigations within Greenvale Business Park to determine service locations and ground conditions. There will be some disruptions, but we will do all we can to minimise these disruptions as much as possible.

What will we be doing?

- We will be digging 6 trial holes and investigations in the area, these are highlighted on the below images with appropriate dates for the investigations.
- We will have some machinery on site such as a 25T excavator to conduct these works and we will also hand dig some of the trial pits close to existing services.
- We will also be conducting plate bearing tests which involve testing the ground to gather information on permissible loads.
- Following the works we will reinstate the area to the same standard as it was prior to us undertaking the works
- **The works will commence on 2nd December 2024 and are planned to be completed by 13th January 2024.**

How will this affect me?

- Access for delivery vehicles into Greenvale Business Park will be maintained at all times
- Business Park users are asked to temporarily seek alternative parking space away from the proposed work areas highlighted below for the periods stated.
- You may notice some machinery and equipment in the area, whilst we carry out these works.
- You may see an increase in construction vehicles and wagons, as we bring in equipment and materials to site. But we don't anticipate this to have a significant impact to the business park.
- Vehicle deliveries will take place between the hours of 7:30am and 5pm Monday to Friday.
- All site deliveries will be contained within the working area locations as shown on the images below.

- We will liaise with businesses directly adjacent to the work areas prior to carrying out the associated trial digs.
- The traffic management and location with date details are shown on the following pages.

Trial Holes & Plate Bearing Tests

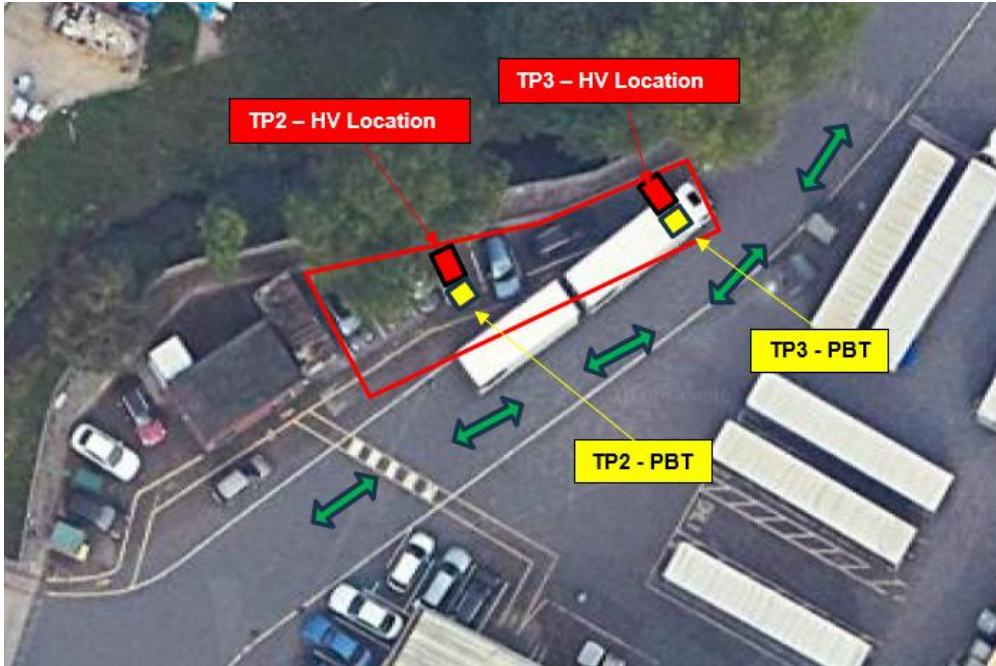
TP6 – 2nd December 2024 – 3rd December 2024



TP5 – 3rd December 2024 – 4th December 2024



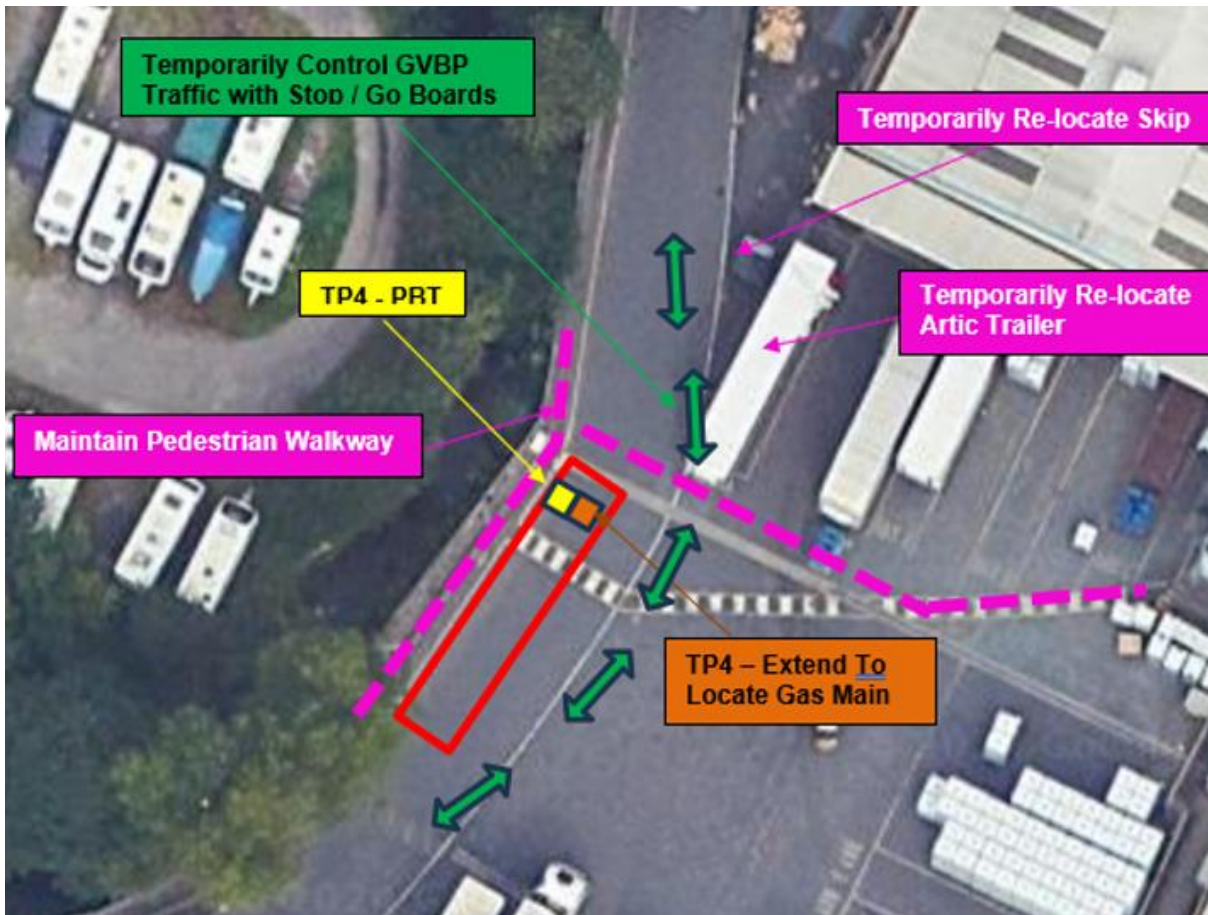
TP2 and TP3 4th December 2024 – 17th December 2024

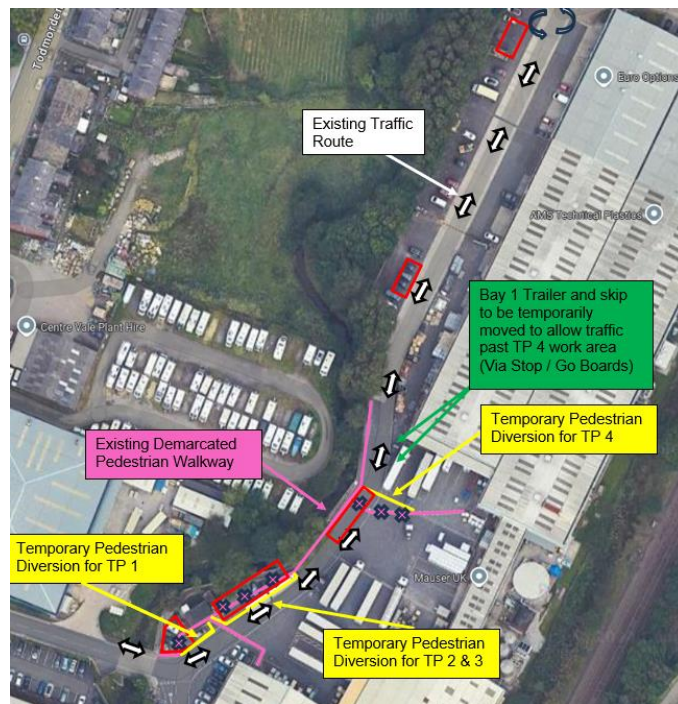
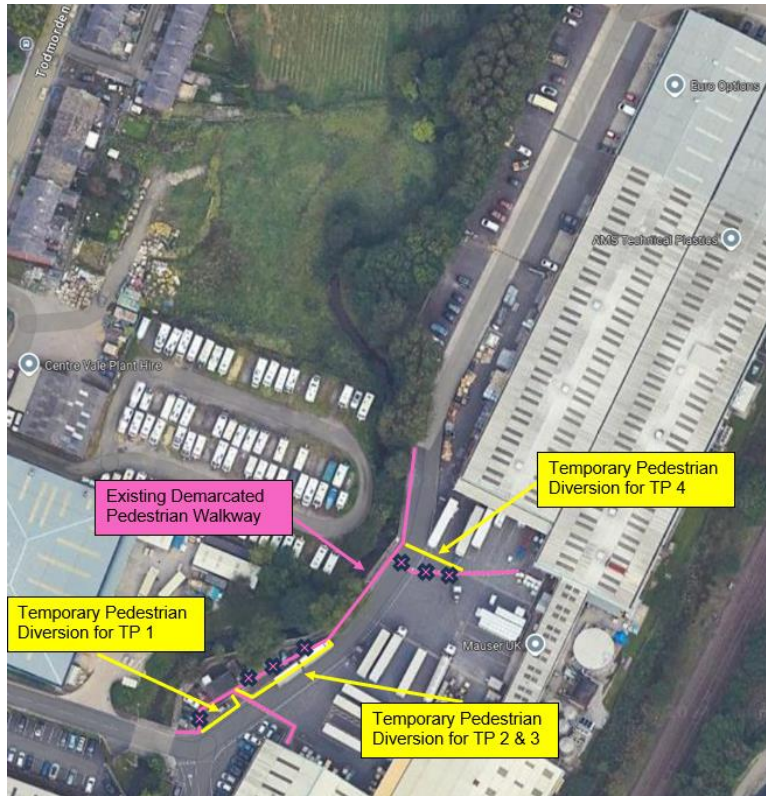


TP1 – 6th January 2025 – 7th January 2025



TP4 – 8th January 2025 – 14th January 2025







During the construction works we will endeavour to keep any noise to a minimum.

We appreciate your patience as we carry out these works and apologise for any inconvenience caused. We appreciate your patience as we carry out these works.

Kind regards,

Customer Services

Volker Stevin on behalf of the Environment Agency

How to stay in contact with us

We will continually seek to engage with residents, businesses, and the wider community as the Scheme progresses in your area. If you would like to provide feedback and/or receive updates, then you can:

Look at our website - You can find more information and download our newsletter on our website <https://thefloodhub.co.uk/rochdale-and-littleborough/>

Email us - You can provide feedback and sign-up for our newsletter by contacting us via email rochdaleandlittleborough.fas@environment-agency.gov.uk or alternatively you can call us on: 020 302 50495

App.

We have recently launched our new VolkerStevin Engage App. This gives you a chance to:

- Keep up to date with progress on the scheme
- Receive regular updates and communications directly to your phone
- Learn new information about our ongoing works and what we are doing within the area
- A chance to send messages to the team, as well as send photos and videos
- Provide feedback to our updates

Use the QR code below to download or visit your App Store and search 'VolkerStevin Engage'. You can also use the App to ask questions and to provide feedback.





Kind regards,
Customer Services