



Longford Brook Vegetation Clearance

- We are carrying out vegetation clearance along Longford Brook to investigate whether it improves water flow.
- This work is part of the proposed **Sankey Flood Risk Management Scheme**. For more details, visit <https://thefloodhub.co.uk/sankeybrookfrmswarrington/>, scan the QR code or view our posters inside the **Orford Jubilee Neighbourhood Hub**.

What We Are Doing:

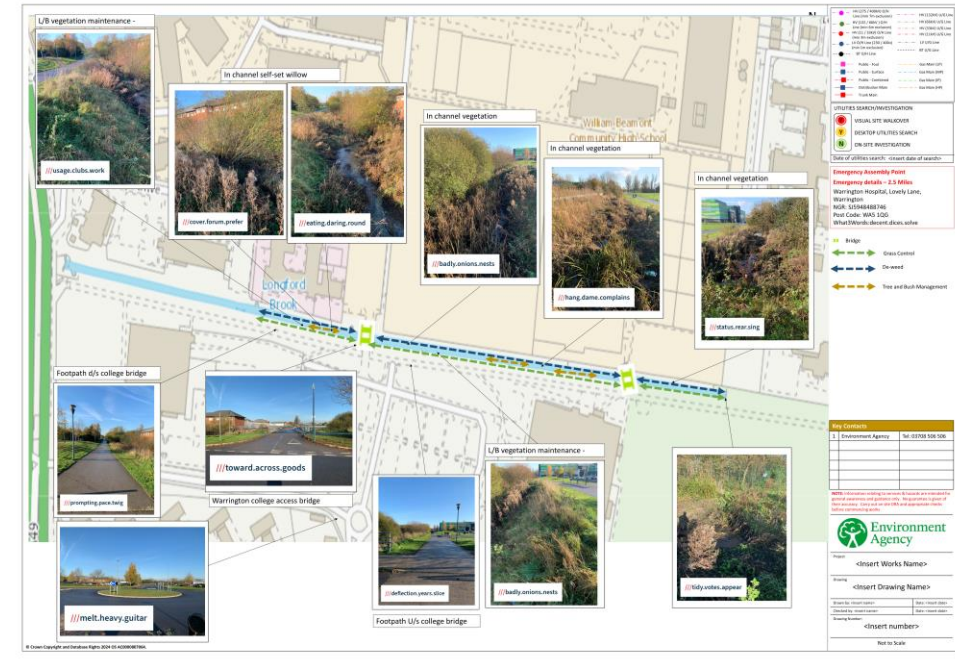
- **Hand Cutting and Grass Mowing:** We will cut back vegetation around the outfalls, mow the embankment, and trim low-lying branches.
- **Machine Clearing:** After this, we will use special machinery to clear a 2-meter-wide strip of weeds from the center of the channel. This width is sufficient to assess the impact on water flow while leaving enough vegetation to support wildlife.

Work Schedule:

- The work is planned for February 2025, and should take around a week to complete. The exact dates are subject to weather conditions.

Material Disposal:

- The material removed from the brook will be placed along the riverbank, far enough from the water's edge to prevent it from being washed back into the brook during high water levels. This may look unsightly at first but will naturally decompose over the next few months.
- This approach helps:
 - **Wildlife Habitats:** The material will provide a safe space for wildlife to return to the area.
 - **Soil Enrichment:** As the vegetation decomposes, it will return valuable nutrients to the soil.
 - **Carbon Footprint Reduction:** We avoid transporting and disposing of the material, cutting down on emissions and avoiding the use of land-fill.
 - **Cost-Effective:** This method is also more economical.



Planned works



We will be using a 9 tonne tracked excavator and a weed cutting bucket with reciprocating blade



Another watercourse after a 2m wide vegetation cut