



# 2024-25 UK Storm Recap Top Trumps

These Top Trumps cards provide a detailed recap of the storms that impacted the UK during the 2024/25 season.

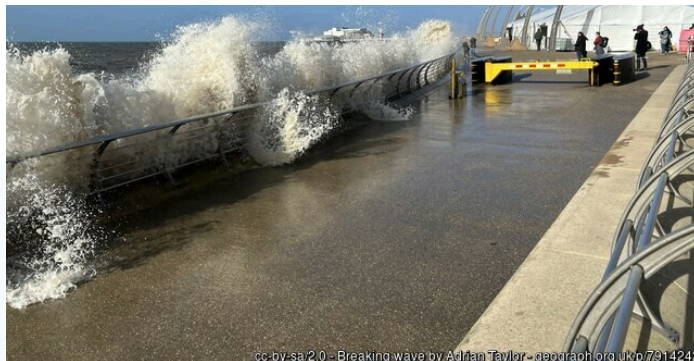
This season saw six named storms, from Storm Ashley through to Storm Floris, bringing a variety of impacts across the country. Alongside these named storms, a special card has also been included for the severe New Year weather event, which was not officially named but caused significant disruption and damage across the North West of England.

These flashcards are designed to fit within the KS2 and KS3 Geography modules. Students can cut them out to compare the different storms and their impacts from the season.

Students can cut them out to compare the different storms and their impacts from the season.



## Storm Ashley



**Date of impact:** 20-21 October 2024

**Wind Speed:** 121mph (Cairngorm Summit)

**Rainfall:** 53.8mm (Ross & Cromarty, Scotland)

**Locations worst hit:** North-western UK, Scotland, Northern Ireland.

### Impacts:

- Ferry services in Western Scotland and Northern Ireland were cancelled.
- Dozens of flights cancelled at Belfast City Airport.
- Rail services in Scotland faced cancellations and speed restrictions.
- Large waves caused coastal damage, throwing beach material onto shorelines.
- Over 200 homes in north-east Scotland lost power.
- The Great South Run in Portsmouth, Hampshire was cancelled.



## Storm Bert



**Date of impact:** 22-25 November 2024

**Wind Speed:** 113mph (Cairngorm Summit)

**Rainfall:** 150mm (South Wales)

**Locations worst hit:** South Wales, South-west England, Northamptonshire, Worcestershire, Gloucestershire, Wiltshire.

### Impacts:

- 5 fatalities.
- 433 properties flooded in South Wales.
- 51 Properties Flooded in NW England, with 6321 protected by EA assets.
- Flooding in Tenbury Wells, Worcestershire.
- Major incident declared in Northamptonshire due to river flooding.
- Disruption to transport (road, rail, ferry services).
- 350,000 homes lost power.
- 300 flights cancelled.



# 2024-25 UK Storm Recap Top Trumps

## Storm Conall



cc-by-sa/2.0 - Rainy Warstones Road View by Gordon Griffiths - geograph.org.uk/p/7704342

**Date of impact:** 27 November 2024

**Wind Speed:** 59mph (Isle Of Wight)

**Rainfall:** 43.3mm (Isle of Wight)

**Locations worst hit:** Southern and central parts of England and Wales.

### Impacts:

- Widespread heavy rain and drizzle in southern and central England, particularly in the southeast.
- Heavy showers affected southern and central Wales.
- No major disruptions recorded.

## Storm Darragh



cc-by-sa/2.0 - River Teme by Ian Capper - geograph.org.uk/p/7941488

**Date of impact:** 6-7 December 2024

**Wind Speed:** 96 mph (Berry Head, Devon)

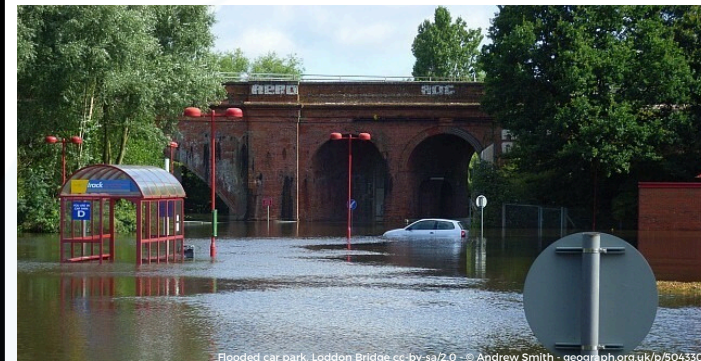
**Rainfall:** 100.4mm (Capel Curig, Conwy)

**Locations worst hit:** West Wales, Cornwall, North Yorkshire.

### Impacts:

- 3 fatalities reported.
- Over 2.3 million power outages, 21,000 still without power after 3 days.
- Major bridges closed, flights cancelled at multiple airports, ferry disruption including Holyhead-Dublin closure for months.
- Llandudno Pier and Pentre Chapel damaged.
- M48 Severn Bridge closed.
- 9 cows killed in Cornwall.
- 22 people stranded in a forest in Yorkshire.

## NYE & NYD 2025



Flooded car park, Loddon Bridge cc-by-sa/2.0 - © Andrew Smith - geograph.org.uk/p/504330

**Date of impact:** 31 Dec 2024 - 1 Jan 2025

**Wind Speed:** 83mph (Isle Of Wight)

**Rainfall:** 144.2mm (Cumbria)

**Locations worst hit:** Northwest England: Greater Manchester, Stockport, Cheshire.

### Impacts:

- Heavy rain led to flooding in Greater Manchester, with a major incident declared.
- In NW England, 541 properties were flooded internally, with 9092 properties protected by Environment Agency Assets.
- Greater Manchester Fire and Rescue Service attended over 100 incidents and evacuated almost 1,000 people.
- In Stockport, 400 people were without power or water until evacuations began.
- Canal collapse in Cheshire led to evacuations.



# 2024-25 UK Storm Recap Top Trumps

## Storm Éowyn



cc-by-sa/2.0 - Boscombe Pier weathering, by Mike Searle - geograph.org.uk/p/7965383

**Date of impact:** 24 January 2025

**Wind Speed:** 100mph (Lanarkshire, Scotland)

**Rainfall:** 75.8mm (Ross & Cromarty, Scotland)

**Locations worst hit:** Ireland, Northern Ireland and Scotland's Central Belt.

### Impacts:

- 2 fatalities.
- The UK's most powerful wind storm for over a decade.
- Significant transport disruption, with many roads closed due to overturned vehicles, ferry services and over 1000 flights were reported to be cancelled.
- Around a million homes were reported to be without power.
- The roof of a leisure centre in Helensburgh was torn off by the strong winds.
- 217,000 without water; 126,000 at risk due to treatment plant failures.
- 24,000ha of forestry blown down in Ireland.

## Storm Floris



© M.J Richardson (cc-by-sa/2.0) geograph.org.uk/p/7426319 Storm-damaged conifers

**Date of impact:** 4-5 August 2025

**Wind Speed:** 82mph (Caithness, Scotland)

**Rainfall:** >80mm Scotland

**Locations worst hit:** Northern and coastal parts of Scotland.

### Impacts:

- East Coast Main Line closed north of Newcastle. West Coast Main Line passengers advised not to travel north of Preston.
- Disruption to Scotland's rail network and cancellation of some ferry services.
- Dozens of flights to and from UK airports cancelled.
- Over 70,000 properties in the Highlands, Moray, and Aberdeenshire lost power.
- Royal Edinburgh Military Tattoo cancelled.
- Noted as one of the most severe summer windstorms in Scotland on record.