



Grove Lodge

Work will commence on this part of the scheme from January 2026. We will be installing sheet piles along the railway line on this part of the scheme. Please note during the initial period you will see more trucks and vehicles on the roads, experience loud noise and vibrations while the site is being prepared. During the initial 2-week period there will a temporary traffic management system in place on Todmorden Road.

Resilient Roch Project- Rochdale Borough Council

We have conducted some basic testing of the flood doors and surveys are still underway by JBA Consulting. Surveys are being used to identify measures which will help reduce flooding to homes and businesses.

We are very keen to work with local schools and would appreciate their participation in the project. Please get in touch with us so that we can register your interest and work with you further. If we cannot assist you via the Resilient Roch project, then we may be able to direct you to other helpful work the council is conducting regarding energy efficiency.

If you would like to be involved or would require further information, please get in touch with us on

✉ resilientroch@rochdale.gov.uk

Community Engagement

We have been committed to working with the local community in as many ways as possible. As part of this ongoing initiative, we have donated timber to the local community which was used for the Littleborough Bonfire. The event was attended by numerous members of the public and we are proud to have contributed to the celebrations.

As part of our commitment to working with the local community, we held an out of hours drop-in session on 23 October between 16:00 to 19:00 which was very successful. We held a further session on 11 December between 10:00 to 14:30. We look forward to holding future drop-in sessions with the community. Please keep an eye out in future newsletters, social media posts and on our Volker Stevin Engage App for further information on dates and times.

Our next Littleborough Library drop-in session will be held on 22 January 2026. Please drop by at any time between 10:00 to 14:30.



Jacobs

VolkerStevin



Littleborough

DECEMBER 2025

FLOOD RISK MANAGEMENT SCHEME NEWSLETTER

Welcome to the Littleborough Flood Risk Management Scheme Newsletter. Providing you with an update on how Phase 1B of the scheme is progressing.

Important Update - Winter Working

As you may have noticed, due to challenges faced with the change in weather, work on the scheme has scaled back in the short-term. You will see less trucks on the road and a reduced volume of noise and vibrations. This will continue until the weather improves in early spring.

In this edition of our Newsletter, we are aiming to provide you with more clarity on the Littleborough Flood Risk Management Scheme. The information in this edition can be kept for future reference or to assist you with your understanding our scheme. As you may be aware, there are varying works making up Phase 1B of the scheme in a few locations around Littleborough. The map on the next page provides an overview of work areas, including access routes. Our scheme is split over areas called Gale West, Gale East, Shottwood Fold, Grove Lodge, Centre Vale and Ealees Brook.

Each area has been shown on the map with a brief update on the works. If you have any queries, please get in touch with us via the Volker Engage App or contact us via email.

The table alongside provides a brief outline of the progress of each part of the scheme.

Littleborough FRMS Phase 1B Scheme Overview		
Location	Works	Schedule
Gale West	Gabion Baskets	Ongoing
	Outlet Structure	Ongoing, minor works
	Inlet Structure	Almost Complete
	River Diversion	Almost Complete
Gale East	Embankment Works	Ongoing
	River Diversion	Almost Complete
	Embankment Works	Ongoing
Shottwood Fold	Embankment Works	Ongoing
	Landscaping	Upcoming soon
Grove Lodge	To be confirmed	Early 2026
Ealees Brook	To be confirmed	Mid 2026
Centre Vale	To be confirmed	To be confirmed

Greenvale Brook

Work on both the upstream and downstream sections of Greenvale Brook are almost complete. Flows will be reinstated along the new route and pumps can then be removed from upstream.

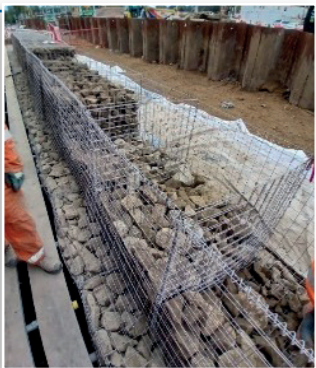
The River Roch downstream diversions have been successfully completed with new grass starting to establish in the location.

Greenvale Business Park

Trees to be reinstated following removal at the southern end of the Gale site during spillway construction. Species mix to include Alder, Silver Birch, Downy Birch, Hawthorn, English Oak, Goat Willow, Rowan, and Hazel

Gale West Gabion Basket Installation

Gabion Baskets are being installed along the railway line. They will form a retaining wall to support the turning circle. Progress has been steady despite challenging weather conditions over the past month.



Gale Embankment Works

Approximately 3,400m³ of clay was placed and compacted on the east embankment, with more than 5,500m³ on the west embankment. The work has now finished for the year and will recommence in spring when better weather returns.



Gale West Structure

The structure is now complete, and reinstatement of the surrounding ground is ongoing. Work was delayed due to finding newts on site. A professional assessment was conducted, and the newts were captured and relocated safely.

Major works have been completed with some minor works to be completed in Spring 2026. Some minor works include walkways and installing debris screens.

Shottwood Fold

The construction team have progressed with the embankment works to stabilise the river. The next phase will focus on landscaping and the removal of the pumps, which are currently diverting river flow.

Grove Lodge

The team have been progressing with the temporary works design in preparation to commence in early 2026. Further communications for residents will follow.

CONTACT US

How will we keep you updated and involve you?

We plan to keep communities up to date via updates on the Flood Hub and newsletters, all future newsletters will be posted on the Flood Hub <https://thefloodhub.co.uk>. We will also continue to use the Littleborough Flood Action Group to share information with residents.

In addition, the latest updates around our works can also be found on the Volkers Engage app. The app allows you to receive regular updates of ongoing works and communication directly to your phone. You can also use the app to send any queries or provide feedback to our updates. Instructions to download the app can be found below.

If you have any queries or concerns and would like to speak to a member of the project team, please email: rochdaleandlittleborough.FAS@environment-agency.gov.uk

Appointments available on request.

Scan the QR Code or search 'Volker Engage' to download

