



2020-21 UK Storm Recap Top Trumps

These Top Trumps cards provide a detailed recap of the storms that impacted the UK during the 2020/21 season.

The 2020/21 storm season saw five storms named over the year with Storm Darcy being named by KNMI in February 2021.

These flashcards are designed to fit within the KS2 and KS3 Geography modules.

Students can cut them out to compare the different storms and their impacts from the season.

Storm Aiden



cc-by-sa/2.0 - Big waves at Norwick by Mike Pennington - geograph.org.uk/p/7117689

Date of impact: 31 October 2020

Wind Speed: 114mph (Cairngorm Summit, Scotland)

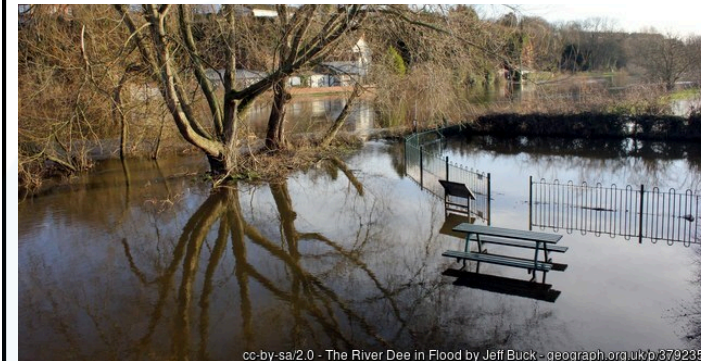
Rainfall: 59.8mm (Scottish Highlands)

Locations worst hit: Western Scotland, Wales, and Northern Ireland.

Impacts:

- Ferry services in Western Scotland were cancelled, and there was disruption to rail services.
- 33 shipping containers were lost overboard from a vessel in the Pentland Firth.
- Localized flooding affected roads in Scotland, Wales, and Northern Ireland.
- The A83 in Argyll was closed due to a landslide.
- Large waves hit exposed western coastlines, increasing the damage.

Storm Bella



cc-by-sa/2.0 - The River Dee in Flood by Jeff Buck - geograph.org.uk/p/3792359

Date of impact: 26-27 December 2020

Wind Speed: 106mph (Isle of Wight)

Rainfall: 109.0mm (Cumbria)

Locations worst hit: Wales, South-West, and Southern England.

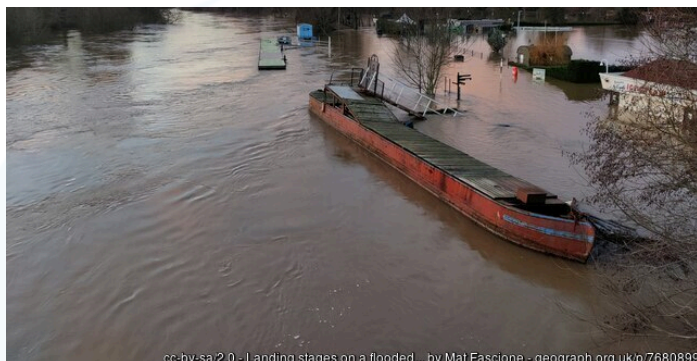
Impacts:

- Disrupted rail services in South-West, South-East England, and London.
- Dover to Calais ferry services were disrupted.
- Large Waves hit coastlines of Wales and Southern England.
- Localised flooding and transport disruption in parts of Oxfordshire, Gloucestershire, Northamptonshire and Bedfordshire.
- Welsh Grand National cancelled due to a waterlogged course.



2020-21 UK Storm Recap Top Trumps

Storm Christoph



cc-by-sa/2.0 - Landing stages on a flooded... by Mat Fascione - geograph.org.uk/p/7680899

Date of impact: 19-22 January 2021

Wind Speed: 69mph (Norfolk)

Rainfall: 123.8mm (Cumbria)

Locations worst hit: North Wales, North-West England, Eastern England and Scotland.

Impacts:

- Homes flooded and evacuations in Cheshire, Warrington, Chester, Manchester, North Wales and Merseyside.
- Northwich town centre submerged; care home residents evacuated by dinghy.
- A bridge was swept away by floodwaters on the River Clwyd.
- Floods disrupted the East Coast Main Line, snow closed the A9 near Inverness, and icy conditions caused crashes on the M5.
- Significant snowfall in North-East England and Eastern Scotland, with snow depths up to 11cm.

Storm Evert



cc-by-sa/2.0 - Was it wind, storm or rot... by Steve Fareham - geograph.org.uk/p/3640231

Date of impact: 30 July 2021

Wind Speed: 77mph (Isle of Wight)

Rainfall: 46.2mm (Humberside)

Locations worst hit: South-West England and the South coast.

Impacts:

- Difficult conditions on roads across south-west England causing travel disruptions.
- Strong winds flattened tents at campsites, causing discomfort for holidaymakers during the summer holiday season.
- Large waves created dangerous conditions on beaches.